

SPECIFICATION:

JOSAM SERIES 46400 FABRICATED STAINLESS STEEL (TYPE 304, 2mm THK), 8" WIDE, V-SHAPED BOTTOM, AVAILABLE WITH OR WITHOUT SLOPE (1% STD.), WITH ANCHOR TABS AND LEVELING FEET, NO-HUB BOTTOM OUTLET AND GRATE OPTIONS.

RUN LENGTHS LONGER THAN 10' PROVIDED WITH FLANGES, GASKETS AND HARDWARE.

SS TRENCH CHANNEL**8" WIDE**

SERIES **46400** (XY)

SEE 46400 TOPS DRAWING FOR GRATE DETAILS

SPECIFICATIONS:☐ **LINEAR RUN**

TOTAL RUN LENGTH (L) = _____

* START HEIGHT (H1) (STD. 2-3/8" [60]) = _____

☐ HEIGHT AT OUTLET (H2) = _____☐ OR STD 1% SLOPE☐ OUTLET AT END OF RUN☐ OUTLET MID-RUN (SPEC. LENGTH L1) = _____☐ **NON-LINEAR RUN**

PROVIDE SKETCH WITH CRITICAL LENGTH AND HEIGHT DIMENSIONS AND OUTLET LOCATION(S).

* WHEN -FC IS SPECIFIED, START HEIGHT (H1) IS MIN. 4" [102]

AUTHORIZED PROJECT
SIGNATURE AND DATE:

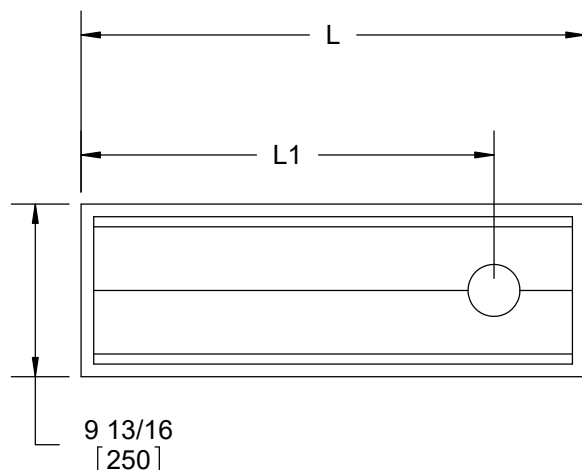
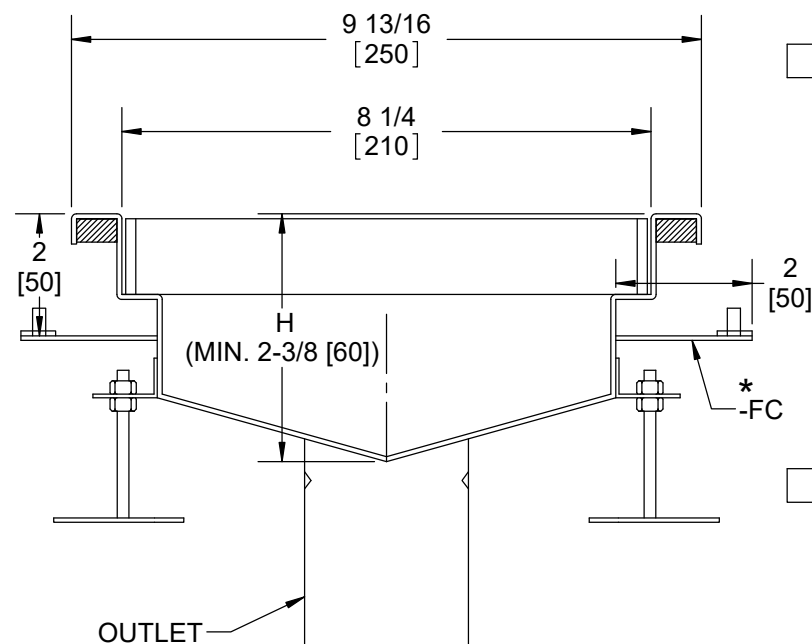
NAME:

TITLE:

SIGNATURE:

DATE:

NOTE: ALL SS TRENCH CHANNELS ARE CUSTOM FABRICATED. ORDERS ARE NON-CANCELLABLE AND NON-RETURNABLE.



* 2" AND 3" OUTLETS USE FLAT STRAINER

OPTIONS:

	-FB	FILTER BASKET*
	-SB	SEDIMENT BUCKET (N/A 2",3")
	-VP	SECURED GRATE
	-316	TYPE 316L MATERIAL
	-BW	BUTT-WELD OUTLET (SPEC. 10, 40, 80)
	-T	THREADED OUTLET (2"-4")
	-PFO	PUSH-FIT OUTLET DIAMETER
	-FC *	FLANGE AND CLAMP

X = GRATE TYPE

	0	NO GRATE
	1	PERFORATED SHEET GRATE
	2	ANTI-SLIP MESH GRATE
	3	PERIMETER SLOT GRATE
	4	LADDER GRATE

Y = OUTLET SIZE

	2"
	3"
	4"
	6"

DATE OF LAST CHANGE: 04/10/25 BLK

DIMENSIONS ARE SUBJECT TO MANUFACTURERS TOLERANCES AND CHANGE WITHOUT NOTICE. WE CAN ASSUME NO RESPONSIBILITY FOR USE OF SUPERSEDED OR VOID DATA.

JOSAM
MICHIGAN CITY, INDIANA

NOTES